

CROWN

SP 1500 SERIES



Perfecting the Process

Operators of order pickers are multitaskers who must efficiently and effectively operate the lift truck in highly dense environments in addition to picking product.

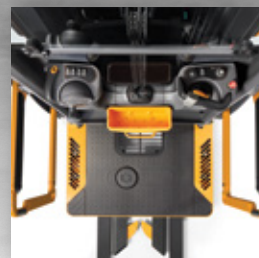
The Crown SP 1500 Series is designed to adapt to best fit the operator's preferences and the work they do. When it comes to improving the order picking process, the SP 1500 Series delivers operator ease of use that results in increased efficiency and optimal lift truck performance.



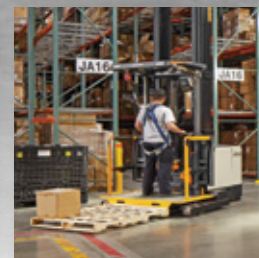
Visibility



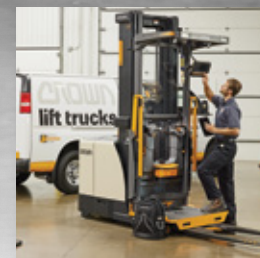
Performance



Operator Focus



Safety



Uptime

SP Series high-level order pickers offer sustained performance thanks to:

- A powerful visibility advantage.
- Confidence-boosting safety features.
- A comprehensive approach to truck uptime, including an advanced user interface and improved serviceability features.
- Industry-leading speeds with intuitive blending of truck functions that contribute to increased productivity.
- An operator-centric compartment that creates a truly functional workstation all shift long.

All-Around Visibility Advantage

Visibility is the foundation of safety and productivity. The Crown SP 1500 Series provides operators with unparalleled views both on the ground and in the air.

This all-around visibility helps promote safe operation, increased productivity and greater operator confidence.

Clear-View Travel

Visibility starts with the combination of the Crown-designed platform and clear-view mast. When elevated, the large upper window provides a wide view of pedestrians, objects and other equipment. The industry-exclusive mid window, centered between the operator controls, provides a view of the floor below when the platform is elevated.



6'2" operator shown in the same position.



Shown with 84" operator compartment height



Clear-View Below

Openings in the center and each side of the floorboard provide visibility beneath the platform and of the outriggers while elevated.



Clear-View Above

The optional large panoramic window above the operator offers a clear view of pick locations and overhead obstructions.

The **industry-exclusive mid window**, centered between the operator controls, provides a view of the floor below when the platform is elevated.

Performance in Motion

The SP Series takes order-picking productivity to the next level by focusing on the performance of the lift truck and the operator while completing pick tasks.

Efficiency is critical in the order picking process. The SP 1500 Series offers the operator exceptional stability at height and outstanding lift, lower, and travel speeds to quickly and confidently complete their tasks. The spacious operator compartment provides the operator with a wide range of motion and accessibility to a wide pick face, allowing smooth movement of the product to the lift truck.

Leading Truck Performance

The SP Series delivers impressive lift, lower and travel performance to help you exceed your throughput goals.

		24v	36v	48v
Travel Speed (PUF)	mph	7.5	7.5	7.5
Lift Speed (Empty)	fpm	71	115/130*	140
Lower Speed (Loaded/Empty)	fpm	80	80	80
Xpress Lower* (Up to 1500 lbs)	fpm	110	205	205

PUF (Power Unit First)

*Optional feature

Durable Gates

Crown's side gates offer a sturdy construction and cushioned lean pad that provide an added measure of comfort, stability and confidence when performing picking tasks. These gates are designed to easily lift out of the way when needed.

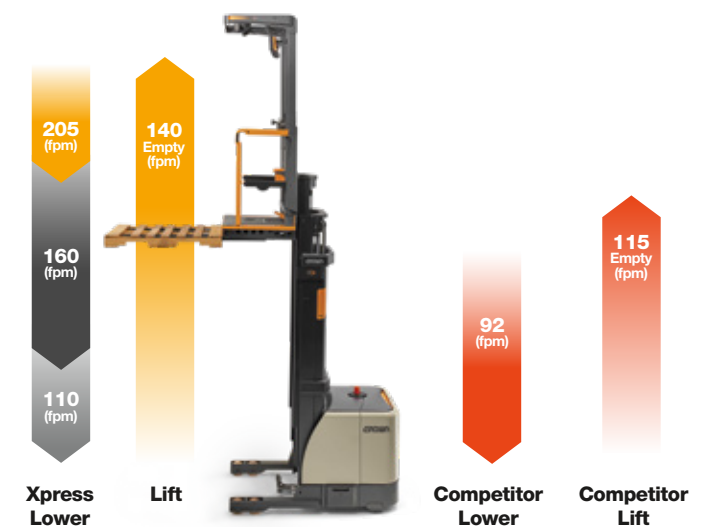


More Range of Motion

The extended access to the pick face helps operators move product with ease without repositioning the lift truck.

Xpress Lower Advantage

Reduce pick cycle times with faster standard lift speeds and more than 2x quicker lowering speed with optional Xpress Lower - an industry exclusive.



- Above staging: Maximum lower speed (205 fpm)
- At staging: Reduced speed (160 fpm)
- Below 72" Lowest speed (110 fpm)

Operator-Focused Environment



The SP 1500's adaptive operator compartment, defined as the Op Zone, can be optimized to meet individual operator preferences and application requirements to boost operational efficiency.



Left-Hand Control



Vertical **Horizontal**

The industry exclusive dual-position tiller accommodates operator steering preference and operational needs. The side grip provides a stable, fixed point of contact.

Adjustability



Optional independently adjustable control pods provide extra flexibility and comfort for operators of varying heights.

Right-Hand Control



The right-hand control set allows the operator to effortlessly blend truck functions. The optional display navigation knob allows for alternative screen navigation.

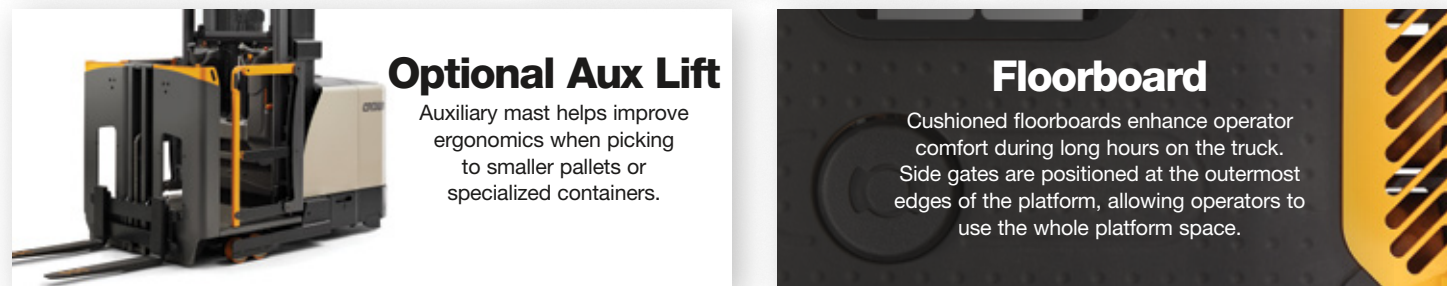
Optional Aux Lift

Auxiliary mast helps improve ergonomics when picking to smaller pallets or specialized containers.



Floorboard

Cushioned floorboards enhance operator comfort during long hours on the truck. Side gates are positioned at the outermost edges of the platform, allowing operators to use the whole platform space.



Customized Compartment

Integrated, flexible Work Assist components support a variety of tasks in a dynamic order picking environment. Individual components can be configured for storage convenience, paper handling and more.

With multiple mounting locations, Work Assist options can be positioned for optimal operator reach and usability. They are designed to withstand everyday use and keep the operator space organized.

- Tools/personal storage
- Trash holders
- Device holders
- Paper storage
- Power options

Wider platform sizes offer additional mounting locations for Work Assist components.

The optional **variable width pallet grab** accommodates various stringer sizes and is available in manual and electric.



Paper Handling



Storage Convenience



Individual Components



Operator-Focused Experience

Your operator deserves a personalized lift truck experience to enhance their daily work activities and keep them informed of lift truck status.

A major force behind Crown's operator-centric experience is our comprehensive Gena operating system. It provides users with an intuitive, data-rich experience. The 7" touchscreen includes widgets displaying key operating metrics—battery state of charge, hour meter, height indicator and steer indicator—at a glance. As a result, operators gain a better user experience day-to-day, including:

- Simplified user onboarding, and prompts on safe operating practices.
- Real-time lift truck feedback relevant to the task at hand.
- Multiple languages available to accommodate a diverse workforce.
- Customizable display for operators to tailor to their tasks.

Intelligence built in



The intuitive Gena operating system optimizes truck performance while providing users with real-time, actionable data.



Optional **operator and task lighting** helps improve visibility so the operator can quickly locate the pick slot and scan the product.

Movable display can be mounted at any height on either side of the operator window. Slide your display into the location that works best.

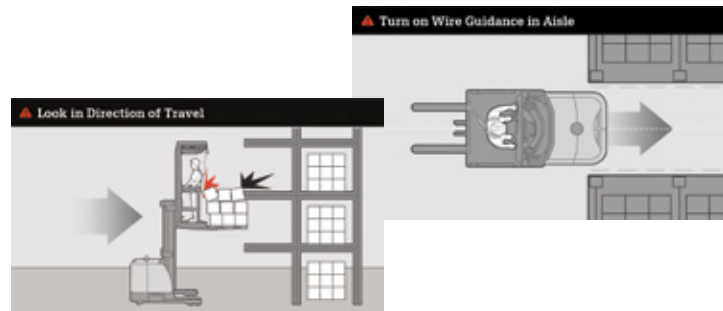
Safety Focus Builds Confidence

Order picking is a physically demanding job that requires concentration on the task at hand.

To help keep safety top of mind, the SP 1500 Series' Gena operating system provides guidance, helps increase operator awareness and promotes a safe and productive work environment.

Safety Reminders

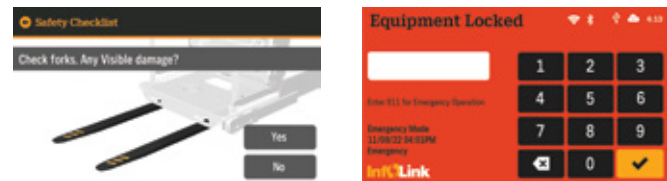
Upon login, the SP 1500 Series displays safety messages accompanied by illustrations to remind operators of their training.



Simplified InfoLink Integration

The SP 1500 Series' Gena operating system is designed for easy integration with Crown's InfoLink Operator and Fleet Management System.* InfoLink provides real-time and historical operational data that reveals areas of risk and identifies areas of opportunity. InfoLink features that help encourage safe operating behavior include:

- Access control
- Visual inspection checklist
- Impact detection and alerts
- Equipment lockout



*Requires InfoLink service plan

Traction Control

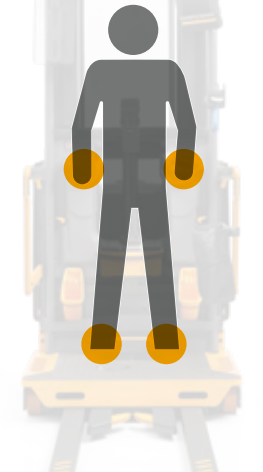
The **OnTrac Anti-Slip** traction control system helps optimize truck performance in wet, slick and dusty applications. It monitors drive tire rotational speed, immediately responding to enhance traction.



Stability Stance

Regardless of the lift truck position, on the ground or 40 feet in the air, a stable stance while traveling is critical. On Crown SP Series trucks, operators have four points of solid contact with the lift truck, including:

- Both feet on the floor in a comfortable position.
- One hand firmly grasping the steering tiller.
- The other hand on the fixed control handle.





Integrated for More Uptime

Shift-long truck availability and long-term lower cost of ownership is the aim for every application. Crown understands these goals are achieved through a deliberate, integrated approach that includes three factors:

- Power source selection
 - Lithium-Ion
 - Lead Acid
 - Fuel Cell
- Internal truck operating system and truck/fleet management software
- Service efficiency

Power Up with a Single Source

Crown's **V-Force Energy Solutions** simplify the power choice and improve outcomes. As the single source for a comprehensive selection of lithium-ion and lead acid batteries, chargers and power accessories, Crown also provides vital knowledge of how forklifts consume power while delivering the right energy for the job. This big-picture thinking and focus on details add up to more value for your business.

No matter your power choice, our goal is to deliver compatible products and services that provide substantial operational advantages day-in and day-out for years to come, including reduced maintenance and parts replacement, increased efficiency as well as time, money and energy savings.

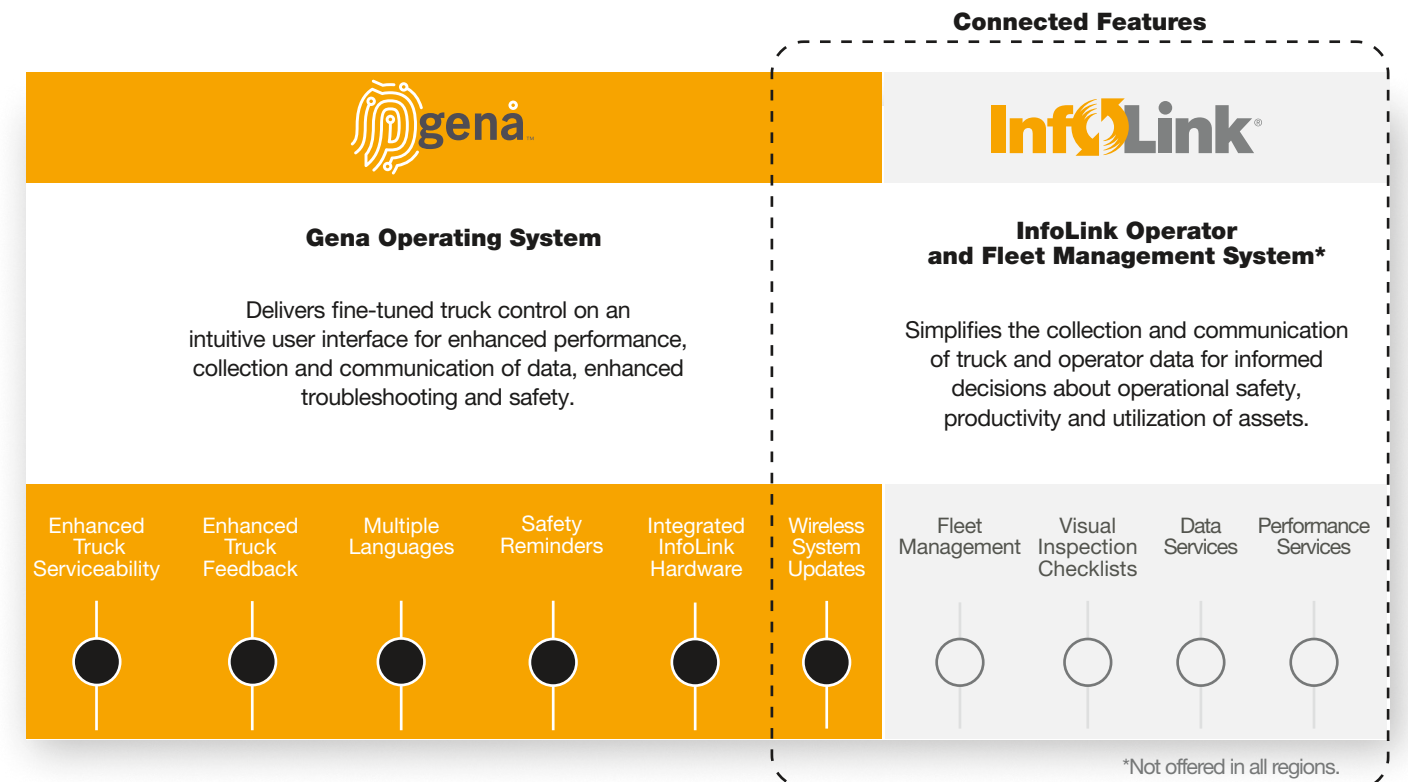
- Onsite evaluations
- Integrated solutions
- Batteries, chargers and accessories
- Fleet and battery management
- Complete support



Connect to Achieve More

Crown's connected solutions provide real-time actionable data to stakeholders tasked with achieving and maintaining gains in areas of productivity, safety and utilization.

The SP 1500 Series comes standard with connected features through the Gena operating system, plus the option for additional features through Crown's InfoLink Operator and Fleet Management System.



Simplify Service with Crown

Operator comfort and operational efficiency are fully integrated into the design, build and service processes. Maintaining each truck to ensure the optimal performance ensures this value continues for years to come. Crown service solutions, provide a range of options including routine service through Crown certified technicians, as well as product features that support in-house serviceability, including:

- **Wireless** system updates keep lift trucks updated without burdening technicians.
- **Easy-to-adjust settings** or return to factory defaults save technician time.
- **Analyzer** allows the selection of individual system components and view of all associated inputs and outputs.
- **Step-by-step calibration** instructions with visuals for improved technician efficiency and consistency.
- **Easy-access** covers, panels and skirt door can be quickly removed or opened for inspection and service.
- **Separate electronics and hydraulic systems** keep oil and heat away from electronics for greater long-term reliability.





Printed on elemental chlorine free and sustainably forested paper.



crown.com

You can count on Crown to sell lift trucks designed for safe operation, but that's only part of the safety equation. Crown encourages safe operating practices through ongoing operator training, safety-focused supervision, maintenance and a safe working environment. Go to crown.com and view our safety section to learn more.

Because Crown is continually improving its products, specifications are subject to change without notice.

Crown lift trucks with Gena operating systems are connected products. Please see crown.com for the data use policy to learn more.

Crown, the Crown logo, the color beige, Gena, the Gena logo, Op Zone, the Op Zone logo, InfoLink, the Momentum Mark, OnTrac, Xpress Lower, V-Force and the ecologic logo are trademarks of Crown Equipment Corporation in the United States and other countries.

Copyright 2024 Crown Equipment Corporation
SF20896 01-24
Printed in U.S.A