

CROWN

SC 6200 SERIES



The concept is simple. Getting it right is the hard part.

Counterbalance trucks rely on a simple balance concept. When it's done right, operators are more confident, risks are reduced and work flows smoother. The SC 6200 Series incorporates more than just basic physics. Attention to detail, advanced engineering, a solid foundation and task-focused ergonomics — that's the ideal balance you find on the Crown SC 6200 Series.

Crown gives you more value and versatility in a multi-purpose truck. Tailor the SC 6200 Series to meet your needs. Choose from three capacities ranging from

3500 to 4300 lbs. Each gives you a distinct edge on stability and maneuverability. Optimize further with options for controls, lights, accessories and more.



SCF 6240
Hard Cabin

SC 6200 Series

- **Capacity**
3500, 4000 and 4300 lbs
- **Masts**
TL Truckers Mast, TL, TF, TT and Quad
- **Max. Lift Height**
295 inches
- **Battery**
ITA and DIN batteries available



Comfort and control. A personal approach.

Life can be challenging for operators. They're on and off the truck all day, inside and outside, in all kinds of weather. Rough ground, tight spaces, poor lighting and traffic make it even tougher. They need a truck that makes the job easier, and the SC 6200 Series delivers. Operators have open sight lines, more headroom and simplified ingress and egress. Cabin, control and accessory options can be tailored to fit the task.

Cabin Options



Weather impacts performance. Take a personal approach and get more done with Crown's cabin options. The partial cabin includes an optional windshield with wiper, a roof with reading light and rear panel with wiper. Add soft doors with embedded magnets when a simplified enclosure suffices. For the ultimate in all-weather protection, the hard cabin option features clear view doors, 2-way sliding windows and heater option.



Partial Cabin



Soft Cabin



Hard Cabin



Shown with hard cabin installed.

Visibility Window

With visibility out the front, out the sides or to the rear, operators gain a clear advantage on the SC 6200 Series. And it's the same with or without a cabin.

D4 Armrest

Features easy, one-handed adjustment of up/down and fore/aft positioning. For use with manual levers or with one of four integrated bionic control options.



Fingertip

Intuitive control of hydraulic and truck functions with minimized hand movement.



Mini-Lever

Variable spaced controls allow for precision movement with a pinch grip.



Dual-Lever

Smooth blending of hydraulic functions with ample spacing of controls for glove use.



Combination Lever

Well-spaced dual-lever for main operation and mini-levers for finer control of third and fourth functions.



Ingress/Egress



Operators easily get on and off the truck due to the low step height, spacious floorboard and sculpted seat deck. The contoured overhead guard provides superior head clearance.

Robustness. Of course. It's a Crown.

Crown lift trucks are all wrapped up in robustness. You can see it in the smallest details because we engineer our lift trucks for exceptional reliability. On the SC 6200 Series, you get steel where it counts and engineering focused on the long term. You see robustness from the solid box frame to the drive units to the rigid I-beam mast and everything in between.



Mast/Integrated Side Shift

Stable loads improve operator confidence. Crown uses nested I-beam masts to minimize longitudinal, lateral and torsional flexibility. Reliability and durability are also improved with Crown's integrated side shift featuring a carriage that shields the cylinders.



Tough Drive Motors

Drive motors need to be designed and built tough to keep a truck running when loads are heavy and temperatures are rising. That is why Crown designs and builds their own drive motors to meet tough application requirements and keep your products moving.



Chassis Construction

It's a tough, busy world where impacts sometimes happen. You need a frame that can stand up to this harsh reality. Crown's fully enclosed box frame and symmetric design helps protect against frame distortion caused by impacts.



Steer Axle

The steer axle takes a beating over rough surfaces and dock boards. To withstand these stresses, the SC 6200 Series steer axle features massive steel construction and heavy-duty tapered roller bearings.

Safety. Work from a position of strength.

Ramps, uneven surfaces, racking, product variations and traffic present an ever-changing, risk-filled environment for operators and equipment. That's why Crown created the Intrinsic Stability System®. It's a proactive approach to stability and control.

The intelligent system uses integrated sensors and controllers to constantly monitor and control key functions and movements. It leverages the truck's inherent engineered stability to enhance safety and performance.

Travel and Cornering Speed Control

The on-board intelligence assists the operator with control based on load weight, lift height, steer angle and truck speed.

Ramp Speed Control

Operators can maintain constant speed on ramps with the assistance of the system's intelligent control.

Tilt Speed Control

System-controlled tilt speeds reduce the risk of a truck tip over.

2-Degree Lift Zone

With forks above free lift height and with a load, forward tilt is limited to 2 degrees.

FREE LIFT HEIGHT

Full Tilt and Lift Speed Zone

Below free lift height, operators have a full range of forward tilt and full tilt speed.

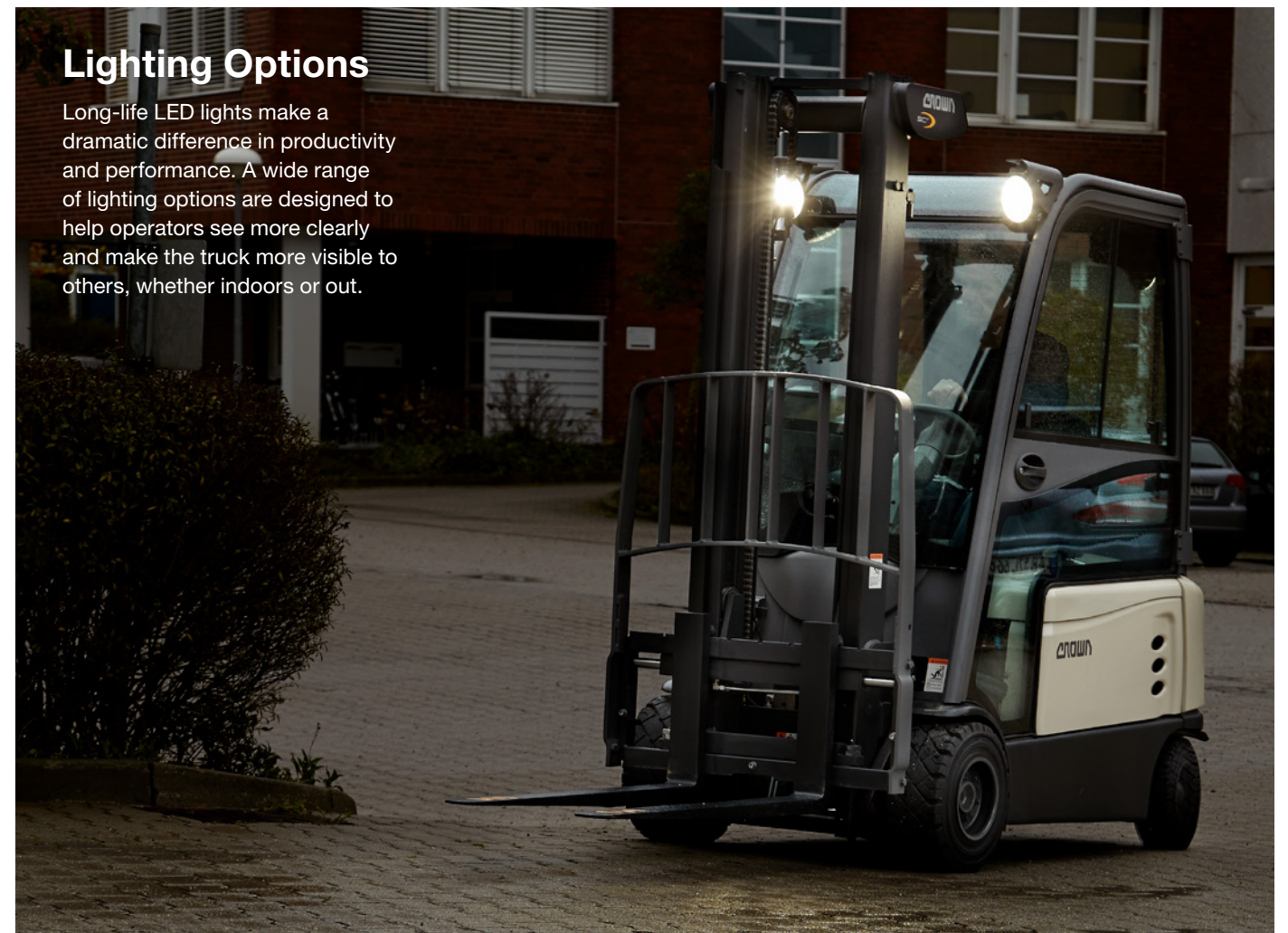
Weight Matters

The SC 6200 Series puts more weight where it counts with heavy use of steel, plus a stability-enhancing counterweight that exceeds required standards.



Lighting Options

Long-life LED lights make a dramatic difference in productivity and performance. A wide range of lighting options are designed to help operators see more clearly and make the truck more visible to others, whether indoors or out.



LED Flashing Light

- LED Lights
 - Tail light
 - Backup light

Interior LED Dome Light



LED Travel Package Lights

- Tail light
- Brake light
- Turn indicators
- Reflectors

Rear LED Work Light (optional halogen light)

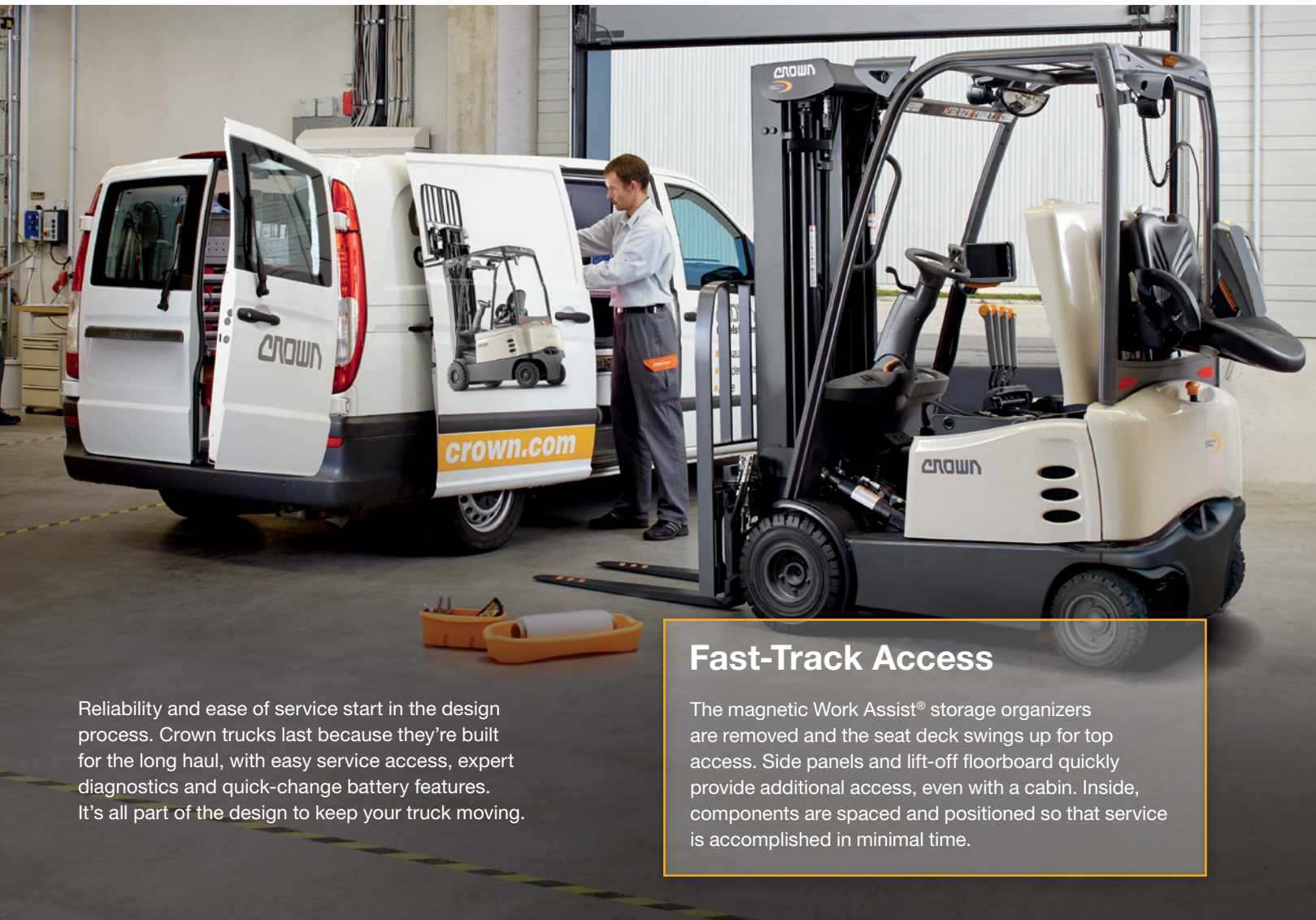
Front LED Work Lights (optional halogen light)

LED Travel Package Lights

- High/Low beam
- Turn indicators



Serviceability. Designed for the long haul.



Reliability and ease of service start in the design process. Crown trucks last because they're built for the long haul, with easy service access, expert diagnostics and quick-change battery features. It's all part of the design to keep your truck moving.

Fast-Track Access

The magnetic Work Assist® storage organizers are removed and the seat deck swings up for top access. Side panels and lift-off floorboard quickly provide additional access, even with a cabin. Inside, components are spaced and positioned so that service is accomplished in minimal time.

Access 1 2 3®

Crown's Access 1 2 3® technology gives you instant, on-board diagnostics. There's no hassle of hooking up a handset or laptop. The easy-to-understand display communicates event codes, while a built-in multimeter can be used to pinpoint the origin of faults. Repairs are faster, too, with no need to swap out components in trial-and-error testing. Service engineers simply identify suspect components and test their functionality through the display.



V-Force® Lithium Ion

Lithium-ion technology is revolutionizing the electric forklift industry to deliver game-changing advantages.



Low Maintenance, Lower Costs

Eliminates the time consuming tasks associated with lead-acid batteries including battery changes, watering or special battery rooms.



No Battery Swapping

One lithium-ion battery can handle one shift or multiple shifts with no need for extra batteries or the downtime required to change them.



Increased Safety

Zero emissions during charging mean no gassing and no exposure to harmful acids and vapors. A multi-level safety architecture provides complete protection during use.



Longer Life

Lithium-ion batteries outperform lead-acid batteries saving replacement and service costs over time.



Improved Efficiency

Achieve greater efficiency, higher sustained voltage properties, and a higher rate of return during any charging event.



True Opportunity Charging

Increase uptime with periodic opportunity charging, enabling one lithium-ion battery to achieve more run time in a 24-hour period.

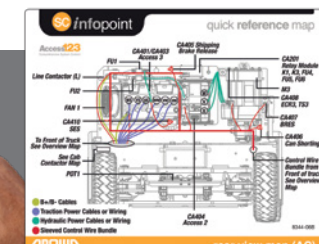
More uptime for your money

Crown's integrated approach combines truck feedback with diagnostics, Crown-made parts and dedicated service teams to provide more uptime and a low total cost of ownership.



InfoLink

InfoLink is a wireless operator and fleet management solution that puts the power of accurate, up-to-date business metrics right at your fingertips.



SC infopoint

Crown's InfoPoint on-truck component maps provide service engineers with vital information to quickly, accurately and easily resolve issues without additional wiring diagrams and schematics.



Integrity Service SYSTEM

Crown's Integrity Service and Integrity Parts solutions ensure long-term truck performance by matching trained service engineers with Crown-made parts for long-lasting performance. That's a major difference with Crown.

Get the value and versatility of the multi-purpose SC 6200 Series.

Visit crown.com
See the SC 6200 Series in action.



Clean Environment. Smart Business.

Printed on elemental chlorine free and sustainably forested paper.



You can count on Crown to build lift trucks designed for safe operation, but that's only part of the safety equation. Crown encourages safe operating practices through ongoing operator training, safety-focused supervision, maintenance and a safe working environment. Go to crown.com and view our safety section to learn more.

Crown Equipment Corporation
New Bremen, Ohio 45869 USA
Tel 419-629-2311
Fax 419-629-3796
crown.com

Because Crown is continually improving its products, specifications are subject to change without notice.

Notice: Not all products and product features are available in all countries in which this literature is published.

Crown, the Crown logo, the color beige, the Momentum symbol, Access 123, InfoLink, InfoPoint, Integrity Service System, V-Force, Work Assist, and the ecologic logo are trademarks of Crown Equipment Corporation in the United States and other countries.

Copyright 2019-2022 Crown Equipment Corporation
SF19393 Rev. 03-22
Printed in U.S.A.