

CROWN

ESR 1000 SERIES



How performance gets real



ESR 1000 Series reach trucks featuring the Gena operating system give you a data-rich user experience that's more human, personalized and interactive. Add to that a new dimension of efficiency, energy savings and performance for a boost to your throughput. Benefits extend from operators to service technicians to management. That's how performance gets real.



Clear and concise help at hand

Skilled operators know what to do at just the right time. On ESR Series reach trucks, operators can deliver higher levels of throughput. The Gena operating system enhances truck performance and makes vital information easy to see, understand and use. It's dynamic, personalized and all within reach on a 7" color touchscreen.



25
languages so
operators can
understand each
message

10+
widgets for truck
functions at a
glance—simply
swipe to select
favorites



Crown's InfoLink Fleet Management System uses the ESR Series' Gena operating system to give your organization a rich source of real-time performance data. Your connected truck helps you precisely monitor and manage compliance, impacts and productivity. And service technicians can use the truck display for enhanced diagnostics, including step-by-step troubleshooting, setup and calibration.



Work smarter, faster at height

XPRESS LOWER™

Optional Xpress Lower technology doubles lowering speed to improve cycle time and increase productivity.

2x

faster lowering speed with Xpress Lower

Positioning forks and loads at height can be a challenge. On ESR Series reach trucks, operators work with skill and precision at any height without compromising productivity. Programmable features, Xpress Lower, intuitive displays, one-touch controls and camera options all work together to raise performance. Advanced hydraulics and motors, including regenerative lowering systems, deliver smoother, quieter and faster lowering.

Automated Precision

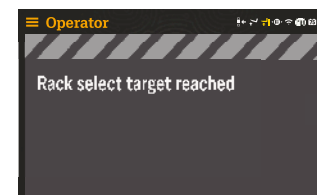
Operators use the ESR Series' optional Auto Height Select feature to automatically stop the forks at programmed rack heights, either by selecting the desired destination on the screen or by using the one-touch button to stop at the next programmed height. Its precise, automated positioning capabilities help avoid product, rack and truck damage, while improving throughput.



Easily program different rack heights for multiple zones in your facility.



The display shows the actual height as the forks rise.



The display confirms when the forks have reached the desired height.

Smarter Fork Leveling



The ESR Series' optional Tilt Position Assist compensates for mast and carriage deflection and automatically levels forks relative to the ground for more precise positioning.

Up Close, All Clear



Camera options for the forks or mast assist with load handling and positioning.



Efficiency in action

17

sensors on truck to collect real-time data

Cornering Speed Control

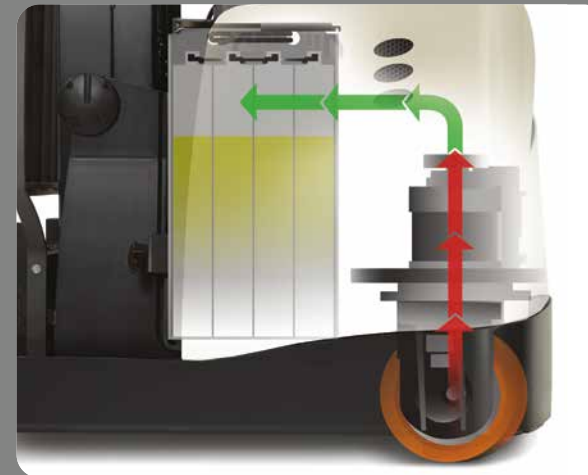
This system automatically adjusts allowable speed and acceleration when the operator drives into or out of curves, providing smooth and confident handling.

Energy savings is one measure of efficiency. Working smarter to get more done with much less effort is another. Crown ESR Series reach trucks give you both. It's a new dimension of efficiency and performance personalized for you. That's the power of the Gena operating system.

Every function on ESR Series reach trucks is linked to the Gena operating system. Sensors integrated throughout the truck gather real-time data on operating conditions, control input and system output. High-speed processors and proprietary algorithms adjust operating parameters for efficient performance. This includes Crown's AC motors, which incorporate the latest generation motor control and the highest thermal rating in the industry. You also benefit from features such as regenerative braking and lowering, which recover energy for longer runtime. It's how you achieve real performance, productivity and efficiency.

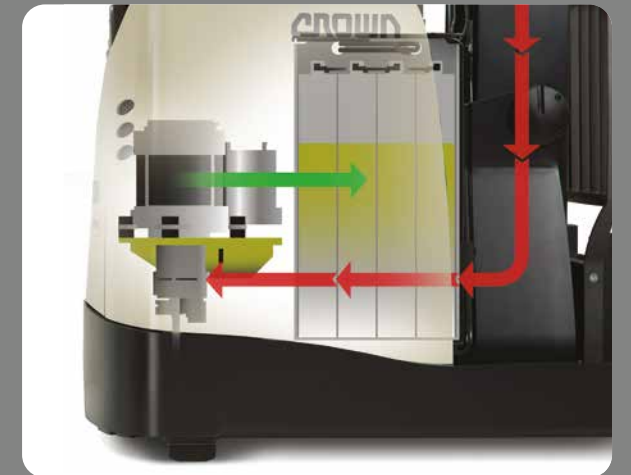
e-GEN® Braking

Regenerative braking saves energy while improving brake performance and life. The high-torque traction motor provides smooth braking while returning energy to the system.



Energized Savings

Regenerative lowering, included with Xpress Lower, recaptures energy as the mast is lowered and returns it to the system for a significant runtime advantage.



Get OnTrac®

Crown's patented OnTrac Anti-Slip Traction Control reduces tire spin during acceleration, plugging and braking. Crown's Gena operating system analyzes truck speed, wheel revolutions and driver inputs to improve tractive performance and increase tire life. Great for wet, slick or dusty surfaces.

More than a truck, A partner

Capacity Limit Alerts



Red
– load exceeds capacity or is above lift height limit



Yellow
– load is approaching the lift height limit



Gray
– load is below capacity and lift height limit

Operators use the optional Capacity Data Monitor to view accurate load weights, lift heights and capacity limits at a glance on the display. Color-coded visuals are designed to alert them of current status, so they stay within safe load limits.

10

checklist graphics

10

pre-programmed safety reminders

With the integration of the InfoLink system on the ESR Series, engaging and helpful features assist the operator. Clear, interactive displays. Required safety login. Automated assistance and coaching. Context-sensitive alerts. Reminders to avoid unsafe operations. Visual alerts. Unobstructed views. This is how the ESR Series informs and enhances performance and productivity.



Dynamic Coaching™

Dynamic Coaching, an exclusive InfoLink feature, offers:

- Interactive performance and safety feedback
- Real-time notification and alert messages
- Ability to share with supervisors via dashboards and reports
- Ongoing training and safety awareness

All Clear To Go

InfoLink customizable checklists with graphics provide data for managing safety, service and compliance.

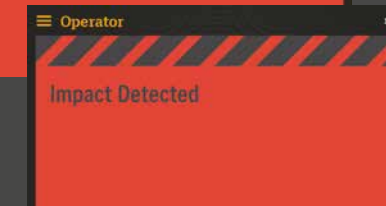
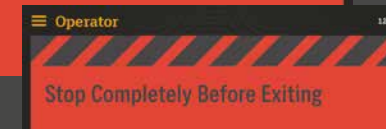


Take Care

The ESR 1000 regularly displays safety messages—illustrations and text—to remind operators of their training.



Notifications
Operators receive real-time notification messages, color-coded blue and announced with a distinct tone.



Alerts
Real-time alert messages are color-coded red and announced with a tone reserved for alerts.

Make it personal

Personalization is how the ESR Series helps operators comfortably move with precision and confidence from one task to the next. Operators choose the optimal position for control, visibility and workflow.

Control Options



Fingertip controls with moveable palmrest
– distinct functions

Dual-lever controls
– combined functions

Multi-task control handle
– blended functions

The More You See...

The ESR Series' offset mast gives the operator a better view of the load wheel, fork and pallet.



Optional panoramic glass maximizes visibility through the overhead guard for productivity improvements.

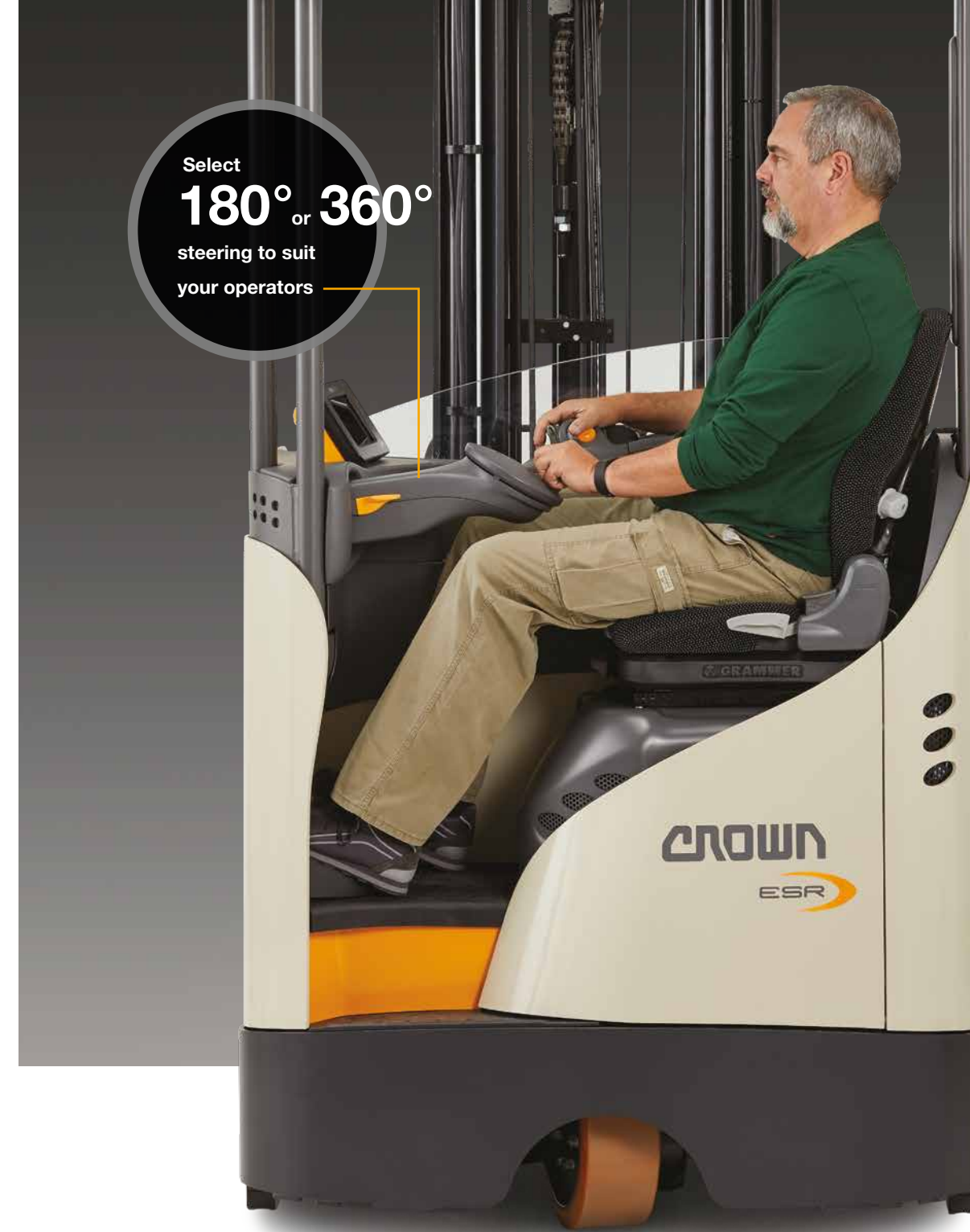


Display And Accessory Controls

Integrated into the armrest, the optional display navigation knob provides a convenient alternative to the touchscreen. Accessories such as worklights and seat heater are controlled from auxiliary switches in the armrest control panel.



Select **180°** or **360°** steering to suit your operators



The right fit, personalized for both small and large operators—operators benefit from individualized control with adjustable settings for the seat, controls, armrest and display screen.



Crown's 360 Select feature provides the choice of 180- or 360-degree steer tire rotation to match driving conditions or personal preference.

D4 ARMREST

The D4 Armrest provides operators the ability to achieve more:

Adjustability
– a full range of available adjustments

Ergonomic Comfort
– a movable palmrest and vibration dampening

Intuitive Design
– a fin-shaped grip and navigation dial

Adaptability
– puts up to 15 separate functions at the operator's fingertips

Adjustability All Around

Adjustability features of the ESR Series include suspension seat height/weight settings; forward/reverse seat adjustments; seat tilt and lumbar support; armrest height and horizontal adjustments; steering tiller height and horizontal adjustments; and display screen inclination.



Smarter, More Efficient And Reliable Reach Trucks

ESR 1020

Mast
Duplex or Triplex

Max. lift height
358 in

Max. lift speed
118 fpm

Max. lower speed
98 fpm

Max. travel speed
6.2 mph

Battery
48 V / up to 930 Ah

Overall width
44 in

ESR 1040

Mast
Duplex or Triplex

Max. lift height
372 in

Max. lift speed
118 fpm

Max. lower speed
98 fpm

Max. travel speed
6.2 mph

Battery
48 V / up to 775 Ah

Overall width
50 in

ESR 1060

Mast
Triplex with integrated sideshift

Max. lift height
534 in

Max. lift speed
157 fpm

Max. lower speed
217 fpm*

Max. travel speed
8.7 mph

Battery
48 V / up to 1085 Ah

Overall width
50, 56 & 60 in

*With optional Xpress Lower



ESR 1020

Available in 3000 lb and 3500 lb capacity, this narrow chassis model is ideal for confined spaces, block stacking applications and rack aisles only slightly over 8 feet wide.



ESR 1040

Available in 3000 lb and 3500 lb capacity, this standard width model is a value-packed solution that doesn't compromise on durability or operator comfort.



ESR 1060

Designed for heavier loads, higher lift heights and greater throughput, this model is available with 3000 lb, 3500 lb or 4500 lb capacities.

Moving toward the future

The ESR 1000 Series takes a considerable leap forward in reach truck design, building on the award-winning ESR 5200 Series. Now you can benefit from advanced productivity and management capabilities as standard features, thanks to the Gena operating system and built-in InfoLink connectivity. At Crown, we're committed to making it real.

Series	ESR 1000	ESR 5200
Truck Features		
Adjustable Performance Settings	●	●
Cornering Speed Control	●	●
Ramp Hold	●	●
Regenerative Braking	●	●
Three Control Options	●	●
Cold Store Cabin	○	○
Super Duty Mast	○	○
Lithium-Ion Ready	○	○
OnTrac Anti-Slip Traction Control	●	
Capacity Limit Alerts	○	
USB Charging Port	○	
Auto Height Select w/ One Touch	○	
Xpress Lower w/Regen Lower	○	
Gena Operating System Features		
Enhanced Truck Calibration	●	
Real-Time Truck Feedback	●	
Custom Software Configuration	●	
25 Languages	●	
Personalized Display Screens	●	
Cautionary Messages	●	
Connectivity	●	
InfoLink Features*		
Fleet & Operator Management	○	○
Personalized Performance Settings	○	○
Safety Checklist with Images	○	
Safety Reminders	○	
Dynamic Coaching	○	

*With an active InfoLink subscription

● Standard ○ Optional

Get real performance

Making things easier, more reliable and cost-effective—that's how Crown delivers real performance. Personalization is the key, from taking care of the operator to meeting your organization's needs. Feature by feature, from today and into the future, the ESR Series moves you closer to peak performance.



Laser Fork Guide – option to easily position the forks at height for increased precision and productivity



Narrow Outriggers – loads up to 39 inches wide will fit between the outriggers without increasing overall width of truck



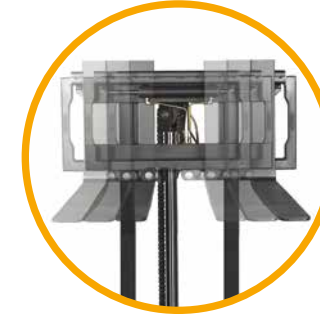
D4 Armrest – provides exceptional operator comfort along with three hydraulic control options for operator productivity



Ramp Hold – holds truck stationary on ramps or push-back rack until a travel input is given



Selectable Performance Levels – five settings (three of them customizable) with operators' personal preferences



5th Hydraulic Function – option to control attachments such as fork positioners with sideshift or clamps to meet specific application requirements



Tilting Mast – ideal for applications with uneven or unlevel surfaces



Worklights – front and rear options available



Overhead Guards – angled, flat, extended, drive-in rack, low clearance or clear glass—we have what you need



Lithium-Ion Batteries – offer a very short charging time, accept unlimited opportunity charging and simplify battery management by avoiding the need for daily maintenance, spare batteries or special rooms for charging

Cold Store Cabin

Operators work comfortably in low temperatures with the ESR Series' climate-controlled cabin without the need for a break to warm-up. Along with a rugged steel structure, the cabin features durable sealing treatments for electrical connections and thermostatically controlled heaters for critical electrical components.



USB Charging Port – suitable for charging phones, tablets and other mobile devices



Clean Environment. Smart Business.

Printed on elemental chlorine free and sustainably forested paper.



You can count on Crown to build lift trucks designed for safe operation, but that's only part of the safety equation. Crown encourages safe operating practices through ongoing operator training, safety-focused supervision, maintenance and a safe working environment. Go to crown.com and view our safety section to learn more.

Crown Equipment Corporation
New Bremen, Ohio 45869 USA
Tel 419-629-2311
Fax 419-629-3796
crown.com

Because Crown is continually improving its products, specifications are subject to change without notice.

Crown lift trucks with Gena operating systems are connected products. Please see crown.com for the data use policy to learn more.

Crown, the Crown logo, the color beige, Gena, the Gena logo, Infolink, the Momentum Mark, OnTrac, e-GEN, Xpress Lower and the ecologic logo are trademarks of Crown Equipment Corporation in the United States and other countries.

Copyright 2020 Crown Equipment Corporation
SF20267 04-20
Printed in U.S.A.