

**CROWN**

# C-D

13,500–20,000 lb Capacity

**Diesel Pneumatic Tire**



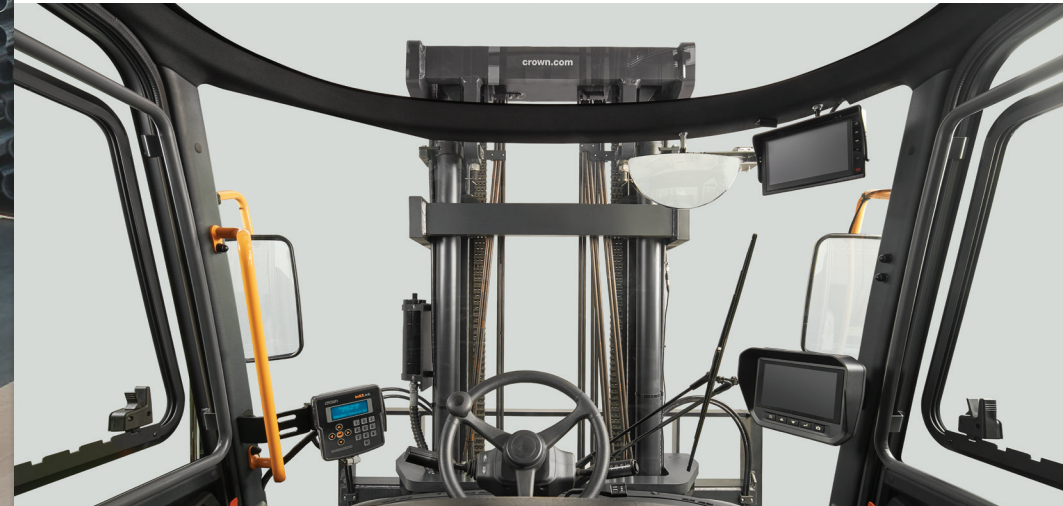
# Strength To Exceed Demands

Built to handle 13,500 to 20,000 pounds, the Crown C-D Series pneumatic forklift delivers reliable, powerful performance while achieving excellent fuel efficiency. When it comes to operator control and robust performance to meet tough application demands, the C-D Series is a proven choice.



## Operator-Centric Design

Operators spend their entire shift in the driver's seat, so it's important that the cabin's design focuses on their needs.



### Unparalleled Visibility

A large curved-glass windshield is specially designed to offer improved visibility so the operator has more awareness while in control, improving safety and efficiency.



### Complete Operator Control

The operator compartment is equipped with an ergonomic adjustable seat, easy-to-reach operator controls and intuitive full-color instrument panels. These features allow the operator to make the most of every move.



### Centralized Switch Panel

For additional convenience, all operation switches are located together, well within reach. An optional push-button start eliminates the need for keys.



### Full-Color LCD Display

A standard 5-inch display provides clear views of all the information the operator needs to know and more. Set PIN codes to quickly access truck settings such as speed limits, service intervals and vehicle diagnostics. A larger 7-inch display is also available as an option.



### Optional Light Packages

Choose from multiple configurations of front and rear work lights or a combination of light packages to help brighten low-light applications.



# Crown's Proven Support Network

Crown support begins long before this truck leaves the factory. Our integrated approach to service provides an exceptional user experience to our customers—before, during and after the sale.

## Fewer Service Intervals = Lower Costs

Engine Oil: 1,000 hrs

Transmission Oil: 2,000 hrs

Drive Axle Oil: 1,000 hrs

Fuel Filter Replacement: 1,000 hrs

Oil-cooled disc brakes include a 5-year/10,000-hour warranty



**A full-tilting operator compartment** and toolless service panels provide quick access to crucial components and to refill consumables, including diesel exhaust fluid. All exterior service panels include locks for security.



**Large, heavy-duty steering spindles** with king pins and sealed taper roller bearings absorb impact and keep moving parts free of contamination. A thick cast iron axle beam offers strength and durability.



**An optional tankless air compressor** can be added as a quick and convenient way to clear dust, dirt or small debris from the operator compartment.



**Crown Equipment Corporation**  
New Bremen, Ohio 45869 USA  
**Tel** 419-629-2311  
**Fax** 419-629-3796  
crown.com

**The Strength to Deliver.**  
Contact your local Crown dealer for a demonstration.

You can count on Crown to sell lift trucks designed for safe operation, but that's only part of the safety equation. Crown encourages safe operating practices through ongoing operator training, safety-focused supervision, maintenance and a safe working environment. Go to [crown.com](http://crown.com) and view our safety section to learn more.

Because Crown is continually improving its products, specifications are subject to change without notice.

Crown, the Crown logo, the color beige, and the Momentum symbol are trademarks of Crown Equipment Corporation in the United States and other countries.

Copyright 2022 Crown Equipment Corporation  
SF20707 11-22  
Printed in U.S.A.

Visit [crown.com](http://crown.com)

See our IC Pneumatic Forklifts

